

What's in this issue:

			
Fun at Camp	Moderator's Lent Message	Opportunities to Learn	Opportunities to Serve

HIGHLIGHTS FROM CHURCH WHĀNAU CAMP



St John's Arrowtown & Flagstaff Summer Camp @ Camp Columba



We ate and shared good food together



We challenged ourselves and learned new skills



We worshipped God together and learned more about following Jesus



We showed courage and climbed really high...!



...and it was freaky...but fun!



We learned to work together as a team



We made new friends



We had so much fun...and we will be back next year!



MODERATOR'S 2025 LENT MESSAGE

Autumnal Letting-Go

After a late burst of summer weather, we are beginning to feel the turn of the season. Mornings have begun to feel quite autumnal. I love that word! And I have to say that autumn is my favourite season. There is something about the softer days, the sense of gathering in, the changing colours of the trees (brilliant in the South), the feeling of a different season with its own uniqueness and vibe.

Autumn also coincides with our season of Lent. The time of the year where we journey towards Good Friday. A time for reflection, repentance and spiritual preparation. A time where many Christians engage in practices such as fasting, prayer, penance, and self-denial to grow closer to God and reflect on the significance of Jesus's sacrificial giving and death on the cross.

So, we have these two seasons of autumn and Lent occurring in parallel. We often hear of people giving something up for Lent; a bit like a shortened (or maybe elongated) New Year's resolution – that for six weeks they will give up, say, chocolate, or social media, or a habit that is not helpful. And we reflect on how the trees 'give up' their leaves in this season. How might we respond, how might we take this seasonal opportunity to reflect more deeply on our faith commitment?

Perhaps we need to think about what our motivation is. If we give up something just to prove that we can, or that we 'should', it may well be an undertaking that brings a hollow sense of victory at the end. So what, we've proved we've got will power! Rather, if we give up something as a way of helping us grow closer to God, how much more meaningful and satisfying our 'letting go' will be.

I have found that with much travelling and a very different routine to my life as I carry out my role as Moderator, and also as parish minister, it has been more difficult for me to maintain a sense of a regular rhythm in my devotional life. For me, this season of Lent is going to provide an opportunity to 'let go' of that sense of dislocation, to claim new ways of incorporating that rhythm into my life.

For those of us who attend Ash Wednesday services and have the sign of the cross in ash placed on our foreheads, hear the words 'Remember you are dust, and to dust you shall return' and 'Repent, and believe in the Gospel', this is both sobering and resonates deeply. This Lenten time offers an opportunity to grow in our Christian faith.

At a time when there is so much uncertainty, prejudice, violence and hatred in our world, it may seem counter-intuitive to turn inwards and reflect in this way. And yet growing in our faith, knowing to whom we belong, reflecting on his self-giving and loving ways, enables us to live more fully in this world that is crying out for hope and justice.

Just as the trees let go of their leaves and stand bare for a season, we too can let go of the things that may distract or mis-shape us, so that we too, like the trees, can be renewed and refreshed for the next season.

"From that time on, Jesus began to show his disciples that he must go to Jerusalem and undergo great suffering at the hands of the elders and chief priests and scribes, and be killed, and on the third day be raised". [Matthew 16: 21]

Rose

Right Rev Rose Luxford
Moderator Presbyterian Church of Aotearoa New Zealand
moderator@presbyterian.org.nz

The [March Bush Telegraph](#) issued by the PCANZ Assembly Office has details on the upcoming General Assembly, KCML courses for Presbyteries, Children and Families Resources, Global Mission's latest [newsletter](#) and much more. To access click on links in text.

The Earthquake Appeal for the Presbyterian Church of Vanuatu is still open. Full details were published in the February newsletter, but can be found in Global Mission newsletter linked above.

Earthquakes of this magnitude with this level of impact are unfamiliar to the Presbyterian Church of Vanuatu, so we have offered to help with providing structural engineers to give building assessments. We are grateful to two engineers who have agreed to donate their time for this purpose. Their assessments will take place in March. Anticipating significant earthquake repair costs going forward, Global Mission is launching an earthquake appeal for the Presbyterian Church of Vanuatu. Funds can be banked into the Global Mission account, 02 0500 0086963 10 with the reference PCV Earthquake Appeal. Please send an email to Katrina Graham, katrina@presbyterian.org.nz confirming the donation so a receipt can be emailed.

OPPORTUNITIES TO LEARN

A Rocha free six-week online Lent group - "The Whole Easter Story" - 5 March-9 April

You are invited to be part of a six-week online Lent group exploring what the Bible has to say about the whole story of the cross, based on "The Whole Easter Story" by Jo Swinney. The 40-day Lent devotional explores how the cross transforms not only our own individual connection with Jesus, but also our relationships with each other and our world. Hosted by Jo Swinney and Jo Herbert-James, with guest contributors from others in the A Rocha family and beyond. See more and sign up [here](#).



The Lent Encounter - sign up for Bible Society's free daily devotionals

Take the book of Exodus as your guide on a journey through the Red Sea and into the wilderness. Receive daily Bible readings delivered to your inbox throughout Lent; Inspiring, thought-provoking devotional prompts written by Bible Society writers; Access to the Lent Encounter podcast so you can listen wherever you are; Be part of the Lent Encounter Facebook group and join others on the journey. Sign up [here](#) ready for 5 March.



GET CRAFTY!

Our tamariki love expressing their creative side through art and craft. We have curated a Pinterest board full of ideas for Lent, Holy Week and Easter-themed projects.

[Take me to Pinterest!](#)



Interested in learning more about Christian religious practices?

Dr Steve Taylor is a Presbyterian minister and a Research Affiliate with Centre for Theology and Public Issues, University of Otago | Ōtākou Whakaihu Waka. He is researching the social impact of religious practices in congregations. He is seeking participants to explore several religious practices in a small group setting. This will involve eight sessions, lasting 60-75 minutes each. Times will be mutually agreed, perhaps during the week or in an evening, sometime between late February and June 2025. Participants will learn about and share in two religious practices, which Steve will select and facilitate. The practices are from Adele Calhoun, *Spiritual Disciplines Handbook* (2005). Participants will also be asked for feedback on their experiences of the religious practices, including through short surveys, keeping a journal and reflecting in focus group. Plus there will be snacks, also provided by Steve.

Participants need to be aged 18 or over. Steve is happy to chat and provide more information about the project and the ethics consent process s.j.taylor@otago.ac.nz or <https://tinyurl.com/STaylorResearch>. Folk can also chat to Brendon McRae brendon@churchatflagstaff.co.nz.

Presbyterian Research Network presents Yvonne Wilkie, speaking on “A Scripture of Their Own: The Forgotten Voices of 19th Century Women Biblical Interpreters,” This talk will be held Thursday 11 September, 5:30 pm, at the KCML Seminar Room, Hewitson Wing at Knox College, Arden Street in Dunedin.

Through a diverse collection of literature, particularly biographies of biblical women, 19th century women shaped “a scripture of their own.” By reading the “feminine” into the biblical text they created a discourse to empower women to claim “her-story” of spiritual heritage and Christian service. The recent research into the history of women’s biblical writings is exciting and offers new insight into the lived faith experience that shaped women’s place and role in an era of religious, social, political, and economic change.

The event is cosponsored with the Presbyterian Research Centre. It is free and open to the public. Refreshments will be served, from 5 pm that evening.



CONNECTION COLLECTIVE

THURSDAY

03
APRIL

YOUNG ADULTS

18-25 yrs, all are welcome
7pm, Elim Dunedin Church
67 Harrow Street

\$5 PER
PERSON

SUPPER
PROVIDED

FRIDAY

04
APRIL

SOUL MATES

For all couples, young and old
7:30pm, Dunedin City Baptist Church
9 Main South Road, Concord

\$10 PER
COUPLE

SUPPER
PROVIDED

SATURDAY

05
APRIL

MENS BREAKFAST

9:00am, Elim Dunedin Church
67 Harrow Street

\$10 PER
PERSON

BREAKFAST
PROVIDED

SATURDAY

05
APRIL

COUPLE GOALS \$30 PER COUPLE

Couples, from 1 - 10 years together
5pm, Otago Yacht Club
25 Magnet Street

NIBBLES,
DRINKS & BBQ
PROVIDED

SUNDAY

06
APRIL

MATT AND BELINDA STOTT

All welcome to come hear a message
9am or 11am, Elim Dunedin Church
67 Harrow Street

REGISTER

FOR THE EVENT(S) THAT
APPLY TO YOU

SCAN



OR

HEAD TO THE SOUTHERN
MARRIAGE RETREAT
FACEBOOK/INSTAGRAM



A Rocha NZ Eco Church national hui, Living Springs Christchurch - 15-17 August

The long awaited A Rocha Aotearoa New Zealand (and Eco Church) National Hui is back! To be held at Living Springs in Christchurch. The hui will run for three days, from 15 to 17 August 2025... so save the dates! More details to come, updated on the A Rocha [Facebook events page here](#).

Online Eco Church Conservation Kōrero

with Anna Yeoman - 31 March 7pm-8.30pm

A kōrero to provide inspiration to anyone passionate about conservation and caring for creation, including our Eco Church community. Especially relevant to church members wanting to get involved in biodiversity work and conservation projects in their local places. Hear from Anna Yeoman as she shares her journey into



conservation, her work with Mokomoko Dryland Sanctuary in Central Otago, and her book, *Geckos & Skinks: The remarkable lizards of Aotearoa*. Register [here](#)

OPPORTUNITIES TO SERVE



Food Bank:

We are very short of: Tinned Tomatoes, sachets of Ben's Rice and packets of pasta. Any support is very welcome. Donations of supermarket paper shopping bags for vege bags would be most welcome. The ones with handles are perfect.

Volunteer Van Drivers:

Club Enliven is seeking Van drivers or programme Assistants, even if you have a couple of hours spare, do get in touch, full details on the attached document.

Adult Buddies:

Our waiting list for young buddies grows as they wait to be matched to an Adult Buddy. More info below and in the link.

What: 1:1 mentoring. Boost children's lives with friendship, fun and encouragement.

When: 2 hours per week on a day that suits you and your young buddy, 12-month commitment.

Where: Waitaki, East Otago, Dunedin, Mosgiel, Clutha, Alexandra, Cromwell, Wanaka and Hawea.

<https://psotago.org.nz/get-involved/volunteer/volunteer-vacancies/adult-mentors-buddy-programme/>

Recycled Foodbank Carry Bags:. - The Seam Team:

In partnership with Dunedin Curtain Bank (who supply suitable robust material) we are keen to produce our own reusable bags. Would you like to be involved?

Check out this link for more info: <https://psotago.org.nz/get-involved/reusable-foodbags/>

For more information, contact: Sarah Davis: sarah.davis@psotago.org.nz or ph: 027 700 3012

Ways for your church to participate in Neighbours Aotearoa

Celebrate with neighbours during March in whichever way best suits your community: host a BBQ; picnic; pizza party; potluck; beach day; host or contribute to a foodbank; hold a crop swap; share baking and muffins; host a



dinner/lunch/brunch/breakfast/morning tea or afternoon tea; share parish veggies, seedlings; host cooking /preserving / fermenting lessons... there are so many ways to share hospitality, get creative!



Presbyterian Support
Otago

SHOP ON CARROLL PRESENTS
**RUNWAY
REVIVAL 2025**
WEAR TO CARE



FUNDRAISER FASHION SHOW

03.04.25

THURS, 3RD APRIL
7:00PM - 9:00PM
DUNEDIN CITY MOTORS

\$65 PP TICKETS available at:
PSOTAGO.ORG.NZ/FASHIONSHOW

CHARITY AUCTION ON THE NIGHT
TO HELP RAISE FUNDS FOR FAMILY
WORKS' FOODBANK & CHILDREN'S
SUPPORT PROGRAMMES. HELPING
BUILD A STRONG FUTURE FOR OUR
COMMUNITY.



RUN IN CONJUNCTION WITH
ID FASHION FESTIVAL 2025
FOR A FULL LIST OF ID FASHION WEEK
EVENTS PLEASE VISIT IDFASHION.CO.NZ



PRESBYTERIAN SUPPORT
OTAGO

REGULAR MONTHLY NOTICES AND CONTACTS



Green Fingers: We are currently restoring our awa next to the church. This little creek is showing signs of life and is breathing again, and some native birds are showing up. There are a few folks who meet for a couple of hours on a Monday and pot away at planting, trapping pests, removing, weeding, etc. Occasionally we have a project in which everyone is invited including our local school. If you want to join us ring Neil

Brown 027 435 4672.

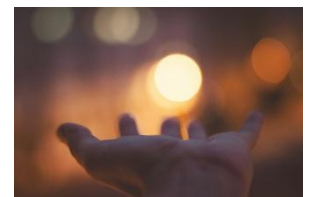
Recycling @ Flagstaff: Bring your plastic milk and cream bottle tops, Tetrapaks (rinsed, flattened, slit open on three sides) and clean glass or plastic jars (any size, must have lids and no need to remove labels) to church. There are collection containers at the back of the church under the resources table. If in doubt, bring them along! For a comprehensive and (relatively) up-to-date list of recyclable items and where to drop them off, refer to page 11 of the June Valley Voice, found here at <https://www.northeastvalley.org/your-community/valley-voice/july-2024>;

Membership Mission Membership: There are a number of people who have moved from the original place where they were baptised and made a confession of faith, and who now make Flagstaff Community Church the place they live out their faith. To arrange an appointment to explore fully the implications of becoming a committed member of our congregation please contact Brendon McRae 027 356 9200.

Sunday Sermon: If you would like a copy of the speaker's message from Sunday, then please email Brendon on brendon@churchatflagstaff.co.nz and a copy will be sent to you.

Pastoral Visit: If you would like a pastoral visit from someone from within the pastoral team or the minister, please ring elder Sarah Barton 021 385905.

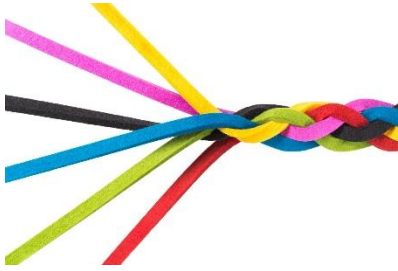
Flagstaff Prayer Time: Sharing life, ministry and prayer together. Everyone Welcome. Every Tuesday 9 – 10 am in church foyer. Join us as we share and celebrate stories of God's action amongst us and pray for one another and discern God's leading into the future.



Interested in studying Theology? The Theology Programme at the University of Otago offers a wide range of papers and qualifications, all available via distance learning. Some papers are taught via videoconferences, others include teaching days in Wellington, while a few involve week-long intensives. For further information go to www.otago.ac.nz/theology. or phone 0800 80 80 98 or 03 479 8639.

Life Groups: Life Groups @Flagstaff are a vital part of who we are as a community of faith as we seek to grow in Jesus. Not only do we explore the messages God has for us from the Bible, but we also have the opportunity to connect with others and experience a place where no-one stands alone. If you would like to join one of our weekly groups, please contact Sarah Barton 021 385905.

Discipleship Groups: which focus on study and prayer. Wednesday 1.30 p.m. Contact Sarah 021385905.



Community Facing Groups: Where the focus is on friendship around a common interest. These groups are welcoming and may centre on an activity, a hobby, a talent, a life stage, a project or service. Groups include, Steady as you Go, Hire a Helper, Community Garden, Women's Coffee Group @ Coffee Culture (Held 1st Tuesday of the month at 7.30 pm), Green Fingers, Walking Groups and more! If you would like to join a group, start a group or find out more information then please contact Brendon on 027 356 9200.

Tithing/Giving: There are many ways we can support the activity of God in our church, community and world. Two ways of making your church offerings.

1. Use internet banking to make direct credits or automatic payments to the Flagstaff Community Church. Westpac bank # 03-0903-0192517-03. Please include your name for reference or if you use Envelopes use your Envelope reference/number.
2. Join the envelope system by contacting Alison Jenkin (Wakari) 021 1052 320. You will receive a set of personally numbered envelopes. This can be placed in the kete/basket at the foyer entrance anytime during Sunday Worship.

If you give to special appeals or missions, you can claim on these donations by writing the name of the appeal or special purpose when you make the internet payment or when you put your number or name and address on an envelope.

Flagstaff Community Church Services 9.30am (Communion 3rd Sunday of each month)

Contacts:

Prayer Chain: Sarah Barton 021 385905

Pastoral Care: Sarah Barton 021 385905

Envelope System: Alison Jenkin 021 1052320

Technical Equipment: Andrew Sims andrewcarolynsims@gmail.com;

Church Newsletter: Lisa Wells office@churchatflagstaff.co.nz;



Kaumātua - Elders

Parish Clerk: Sarah Barton parishclerk@churchatflagstaff.co.nz

Presbytery Elder: Don Lind donovan.lind@gmail.com

Vanessa Gordon: ness.gordon@gmail.com

Tim Mephram: tmephram@rautakiadvice.co.nz

Gary Dent: gary.dent7@gmail.com

Andrew Sims: andrewcarolynsims@gmail.com

Child Protection Officer: Jane Davis edlumeric@icloud.com

Health and Safety Officer: Hamish Cartwright cartwright012@gmail.com

Minister: Rev Brendon McRae

Phone: 027 356 9200

brendon@churchatflagstaff.co.nz

Parish Contact details:

Administrator: Lisa Wells

office@churchatflagstaff.co.nz

P O Box 10074

Halfway Bush, 9042, Dunedin

Office and Church: 9 Centennial Avenue,
Wakari, Dunedin

Website: www.churchatflagstaff.co.nz

Facebook: www.facebook.com/churchatflagstaff